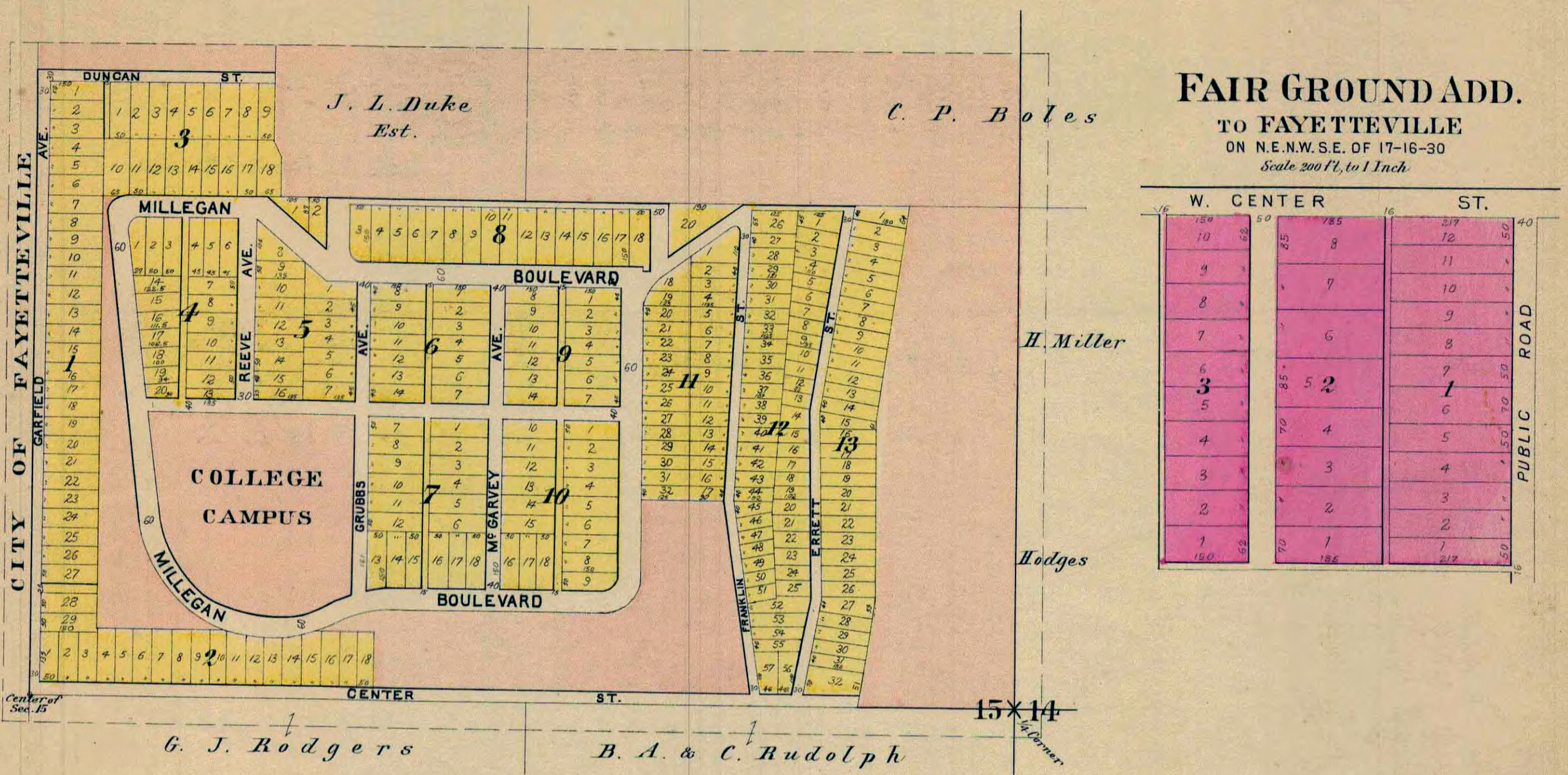


# EAST MOUNTAIN

SUBURB

IN N.E. 1/4 SEC. 15-16-30

Scale 300 feet to one inch.

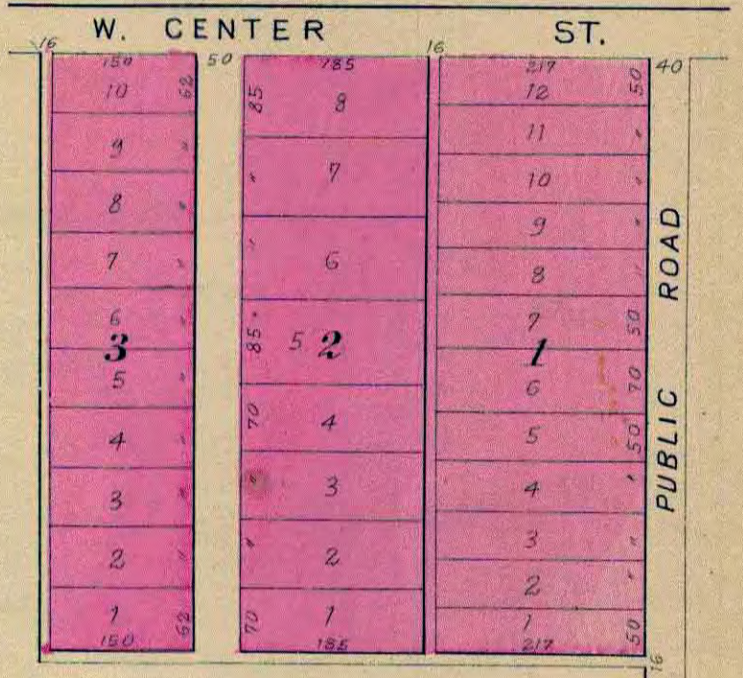


## FAIR GROUND ADD.

TO FAYETTEVILLE

ON N.E.N.W.S.E. OF 17-16-30

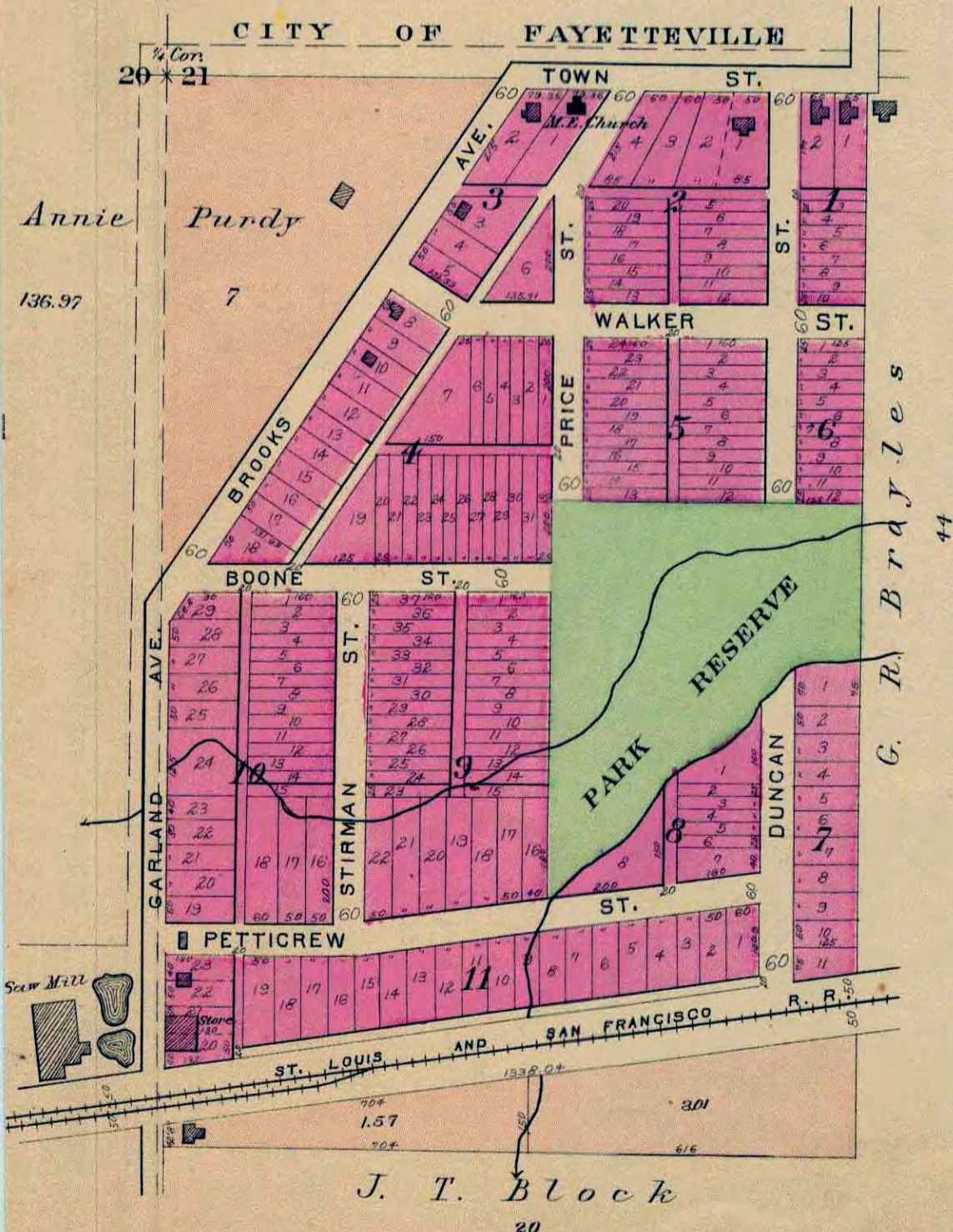
Scale 200 ft. to 1 Inch



## PARKSDALE

IN W 1/2 S.W. SEC. 21-16-30

Scale 300 ft. to one inch.



## FARMINGTON

ON SEC. 28, T. 16, RANGE 31

Scale 300 feet to one inch.

