

# APCO P25 & AWIN

Washington County,  
Arkansas

Joe Gordon &  
Josh Stubbs

DECEMBER 11, 2018



**MOTOROLA SOLUTIONS**



# APCO Project 25 Standard

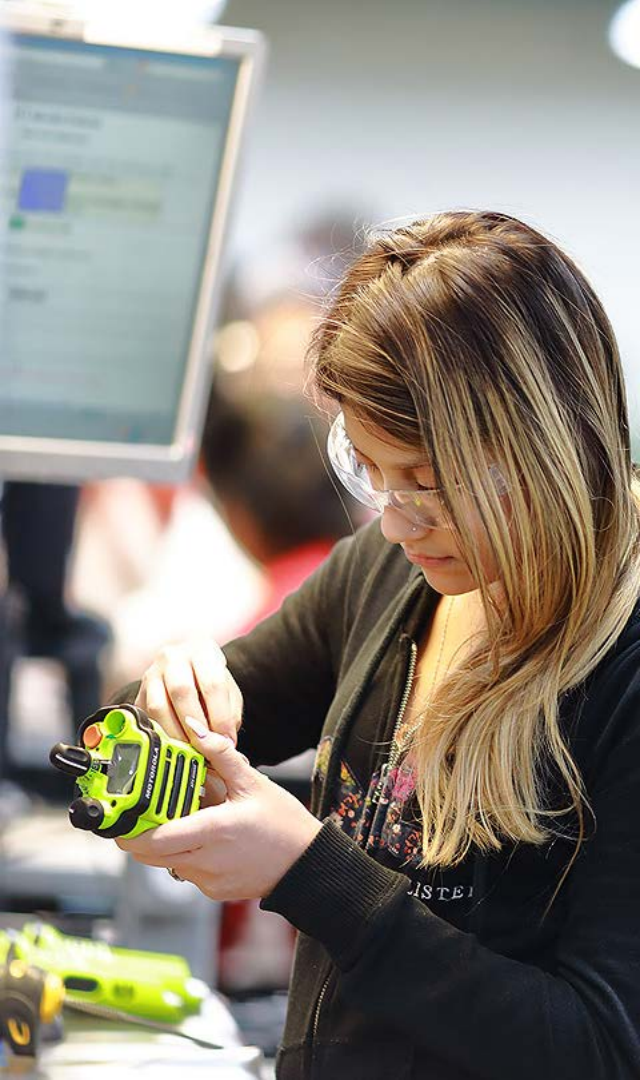


## APCO P25 Standards

- ❖ Founded 1935 (MSI founded 1939)
- ❖ Project 25 Developed in 1989
- ❖ Purpose-built for Public Safety
- ❖ Digital Standards for Trunking and Conventional Radio Systems
- ❖ Sets Standards for Interoperability, Network Availability, and System Resilience



# AWIN TODAY



## ASTRO 25 Project 25 Statewide System

### System Infrastructure

2-Zone Core (Master Sites @ DIS & ADEM)

### RF Infrastructure

(100+) 700/800 MHz Trunked Radio Tower Sites  
+ (3) Site-on-Wheels

### Radio Dispatch

(130+) Dispatch Positions across (42) Dispatch Sites

### Radio Subscribers

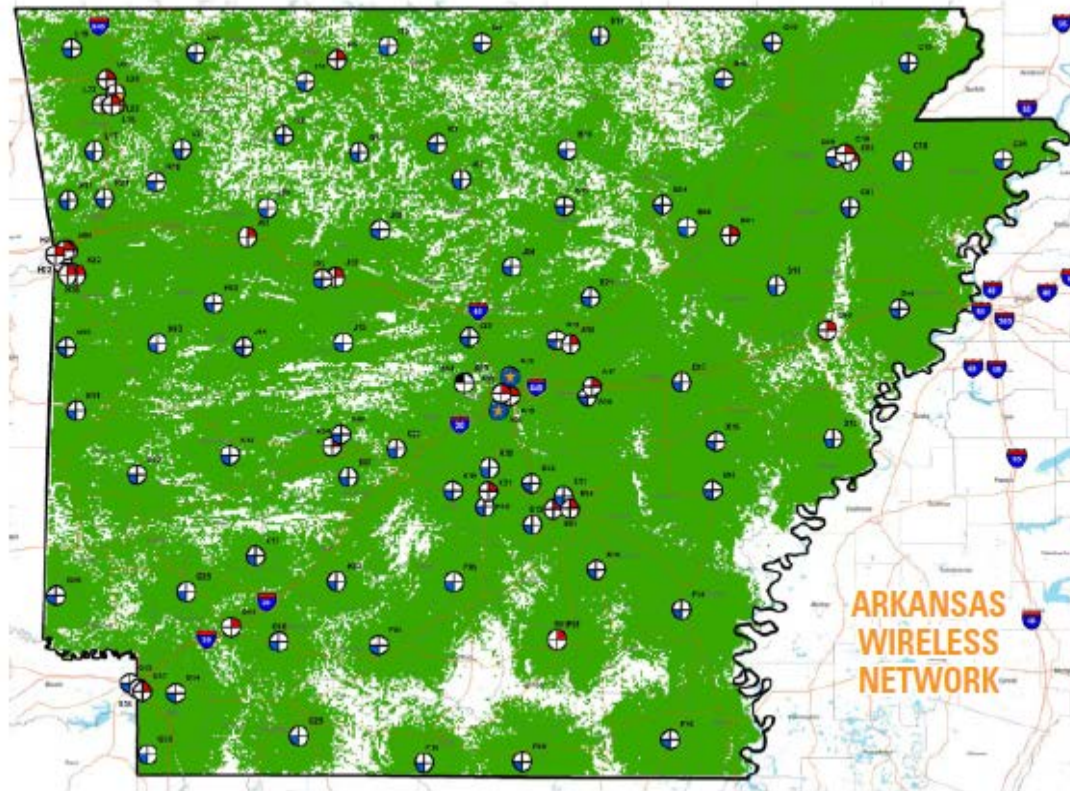
30,000 Subscriber Radios

# AWIN PROJECT 25 SYSTEM COVERAGE



- In the GREEN is guaranteed radio coverage

- Every time a city or county joins AWIN and adds towers the coverage gets better for every AWIN user





# Why do governments invest in public safety radio systems??

- 1. Coverage** – Government users invest for coverage for their first responder agencies.
- 2. Interoperability** – The ability to interoperate seamlessly with other first responder agencies in a time of crisis or natural disaster.

***There is no system that offers better coverage or interoperability than the AWIN P25 System.***

# The AWIN Revolution in Northwest Arkansas



- The City of Fayetteville invested and joined AWIN in 2011.
- The City of Rogers invested and joined AWIN in 2017.
- Benton Co. invested and joining the Rogers AWIN system in 2018.
- The City of Springdale is planning an investment in January 2019.
- Siloam Springs is an investment in January 2019.



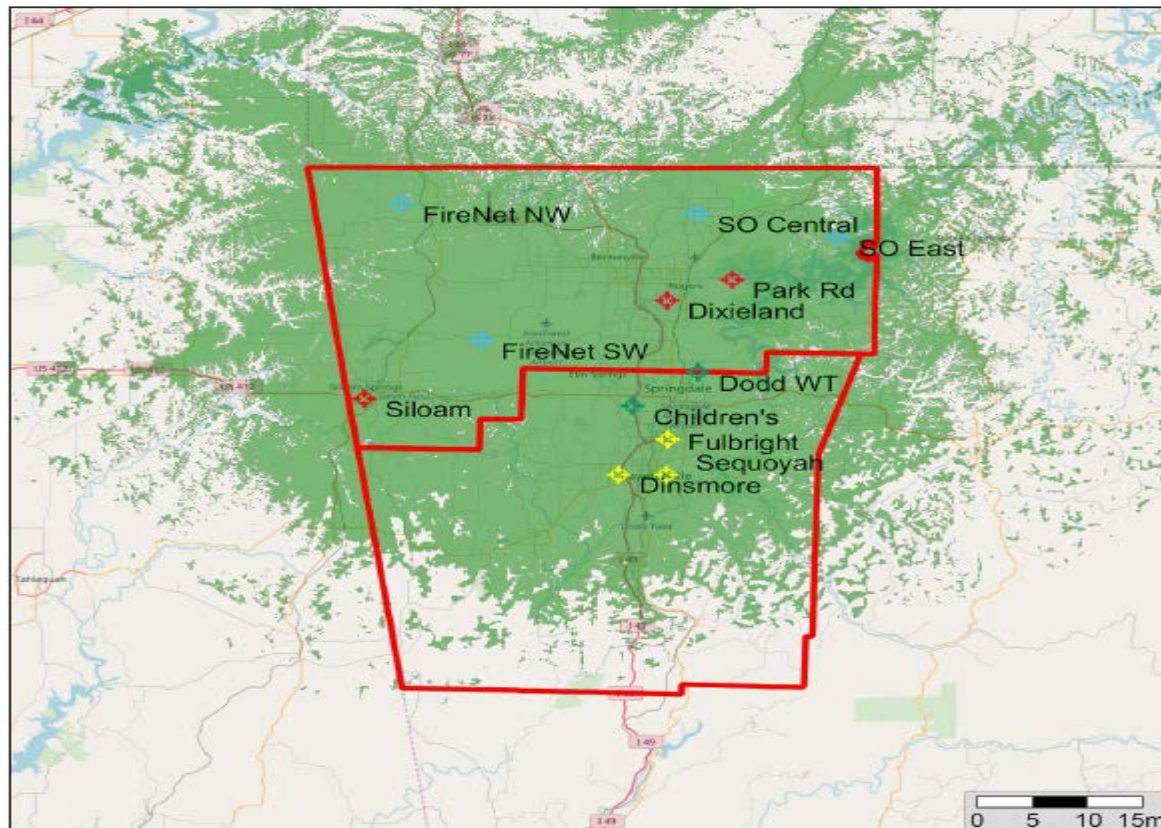
# SchoolSAFE Communications



**MOTOROLA SOLUTIONS**



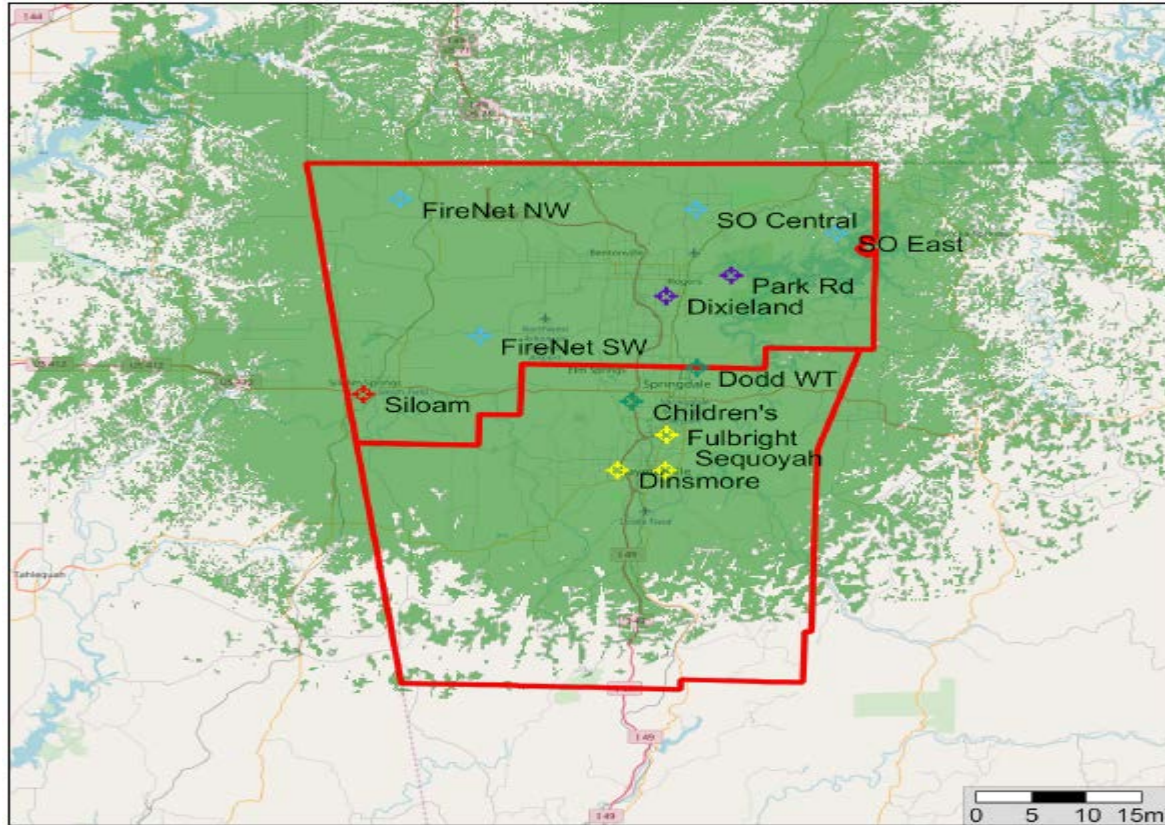
# FAYETTEVILLE, ROGERS, SPRINGDALE, BENTON, SILOAM – PORTABLE HH OUTBOUND







# FAYETTEVILLE, ROGERS, SPRINGDALE, BENTON, SILOAM – MOBILE OUTBOUND

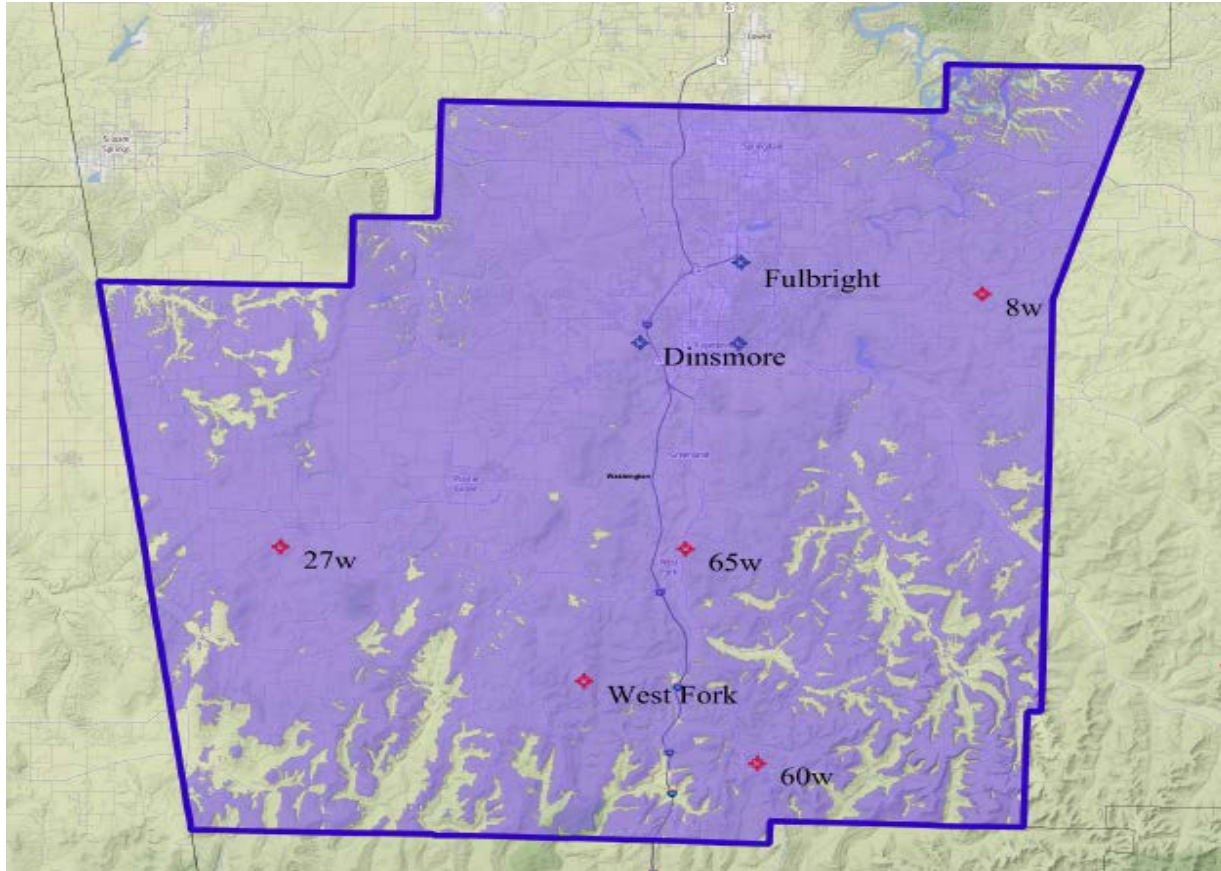


# WASHINGTON CO. PORTABLE RADIO COVERAGE AT 95% – OUTBOUND



**Motorola  
guarantees 95%  
outbound  
portable radio  
coverage**

**The tower  
sites 27W,  
65W, 8W And  
60 W are new  
green tower  
sites and  
need to be  
constructed.**



**The tower sites at  
Fulbright,  
Dinsmore,  
Sequoyah and  
West Fork are  
existing AWIN  
sites. The county  
would just add  
channels.**



# THANK YOU



**MOTOROLA SOLUTIONS**

MOTOROLA, MOTO, MOTOROLA SOLUTIONS and the Stylized M Logo are trademarks or registered trademarks of Motorola Trademark Holdings, LLC and are used under license. All other trademarks are the property of their respective owners. © 2018 Motorola Solutions, Inc. All rights reserved.



**MOTOROLA SOLUTIONS**

# P25 – Public Safety Grade



Emergency Preparedness



Own your equipment & FCC spectrum



ISO Ratings