



PASSE

The PASSEs can help with your PCP assignment.



**Primary Care
Physicians**

Arkansas Total Care **1-866-282-6280**

- Did not reassign PCPs, so you kept your same PCP.
- PCP does not appear on card, but clients can still see their PCP.
- PCP does not appear as assigned in the system, but the PCP can still submit claims to the PASSE.

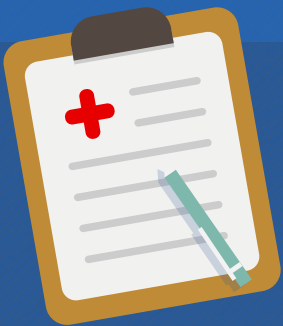
Empower **1-866-261-1286**

- Did not reassign PCPs, so you kept your same PCP.
- PCP does not appear on card, but clients can still see their PCP.
- PCP does not appear as assigned in the system, but the PCP can still submit claims to the PASSE.



Summit **1-844-405-4295**

- Did auto-assign some PCPs, but you can still see your preferred PCP and call to change your PCP assignment in the system.
- PCP does not appear on card, but clients can still see their PCP.
- PCP does not appear as assigned in the system, but the PCP can still submit claims to the PASSE.



During this transition of at least 60 days, a prior authorization is not needed to see your primary care physician. Even if your PCP can't see you as their assigned patient in their system, your PCP can still provide services to you.

*For more information about the PASSE Program,
visit our website: www.passe.arkansas.gov*