

Zoning Board of Adjustment

Thursday, September 29, 2022, 5:00 pm
Quorum Court Room, Washington County Courthouse
280 North College Avenue, Fayetteville, Arkansas

Agenda Items

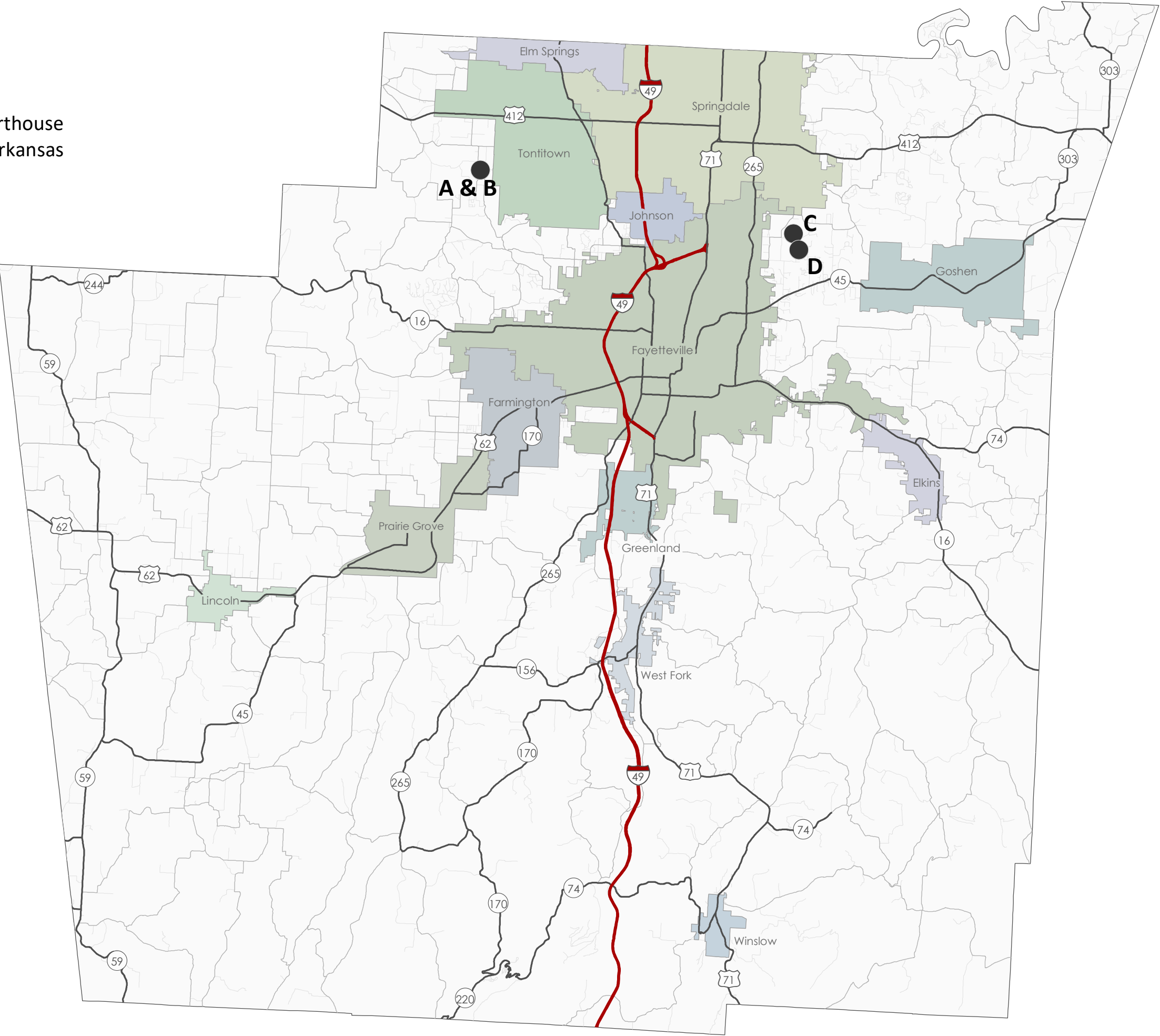
A. Melinda Barron Variance - Acreage
Variance Request to Deviates from Acreage/Lot Size Requirements

B. Melinda Barron Variance - Setbacks
Variance Request to Deviates from Building Setbacks Requirements

C. Donna Sowell Variance
Variance Request to Deviates from Acreage/Lot Size Requirements

D. Bret Schulte Variance
Variance Request to Deviates from Acreage/Lot Size Requirements

0 5 10 Miles



Washington County Planning Board
Thursday, September 29, 2022, 5:00 pm
Quorum Court Room, Washington County Courthouse
280 North College Avenue, Fayetteville, Arkansas

Agenda Items

A. Lodge at Water's Edge CUP
Conditional Use Permit Request Request

B. Farmington Quarry Expansion HI-CUP
High-Intensity Conditional Use Permit Request

C. Farmington Quarry Expansion HI-Pre-LSD
High-Intensity Preliminary Large Scale Development Request

D. Replat Lot 211 Wedington Woods Minor Subdivision
Land Development Request

E. North Road Minor Subdivision
Land Development Request

F. Teen Challenge of Arkansas Pre-LSD
Preliminary Large Scale Development Request

N

0

5

10

Miles

